

Free Knitting Patterns

Knitting and crocheting patterns.

Collection of knitted models, descriptions, patterns, charts.



Cable and Seed Stitch Baby Sweater



Size: 12-18 months

Materials:

200 g Kartopu Flora Grey (col K718) (100% Akrylic, 230 m/100 g); 1 pair quick knit needles and 1 circular knitting needle, both size 4.

Cable & Seed Stitch: Work to chart.

Rib Pat: K2, P2 Rib.

Seed Stitch: odd number of sts:

Row 1: Selv st, * k1, p1; rep from *, end k1, selv st.

Row 2: K the purl sts and p the knit sts.

Rep row 2 for seed st.

Gauge:

over Cable & Seed Stitch: 24 sts and 28 rows = 10 x 10 cm (after blocking);

Rib Pat: 24 sts and 30 rows = 10x 10 cm;

over seed stitch: 18 sts and 28 rows = 10 x 10 cm (after blocking)

Back:

Cast on 64 sts and work 4 cm = 12 rows in rib pattern for border.

Then work in Cable & Seed Stitch as foll: Selv st, work 20-st rep 3 times, 2 sts in Rev St st, selv st.

Work even in pat as established.

Neck shaping:

When work meas 26 cm from border, bind off centre 20 sts and finish both sides separately.

For rounding from each neck edge, bind off 4 sts once and 3 sts once.

Bind off rem 15 shoulder sts.

Front:

Work same as Back, but for the Neck Shaping, when piece measures 22 cm from border, bind off centre 12 sts and finish both sides separately.

For rounding from each neck edge bind off 3 sts once, 2 sts twice, 1 st 4 times.

Bind off rem 15 shoulder sts.

Sew shoulder seam.

Sleeve:

With RS facing, pick up and k30 sts along top side edge of front and k30 sts along top side edge of back (= each 14 cm).

Then cont as foll: Selv st, 12 sts in Seed st, 1 st in St st, work sts 11-20 patt rep once + work patt rep once, 2 sts in Rev St st, 1 st in St st, 12 sts in Seed st, selv st.

For the sleeve shaping, dec 1 st each side of next row and every 4th row 13 times = 32 sts.

When work meas 20 cm = 56 rows from picked-up sts, work 4 cm = 12 rows in rib pattern for border.

Bind off all sts in pat.

Finishing:

For the **Neckband**, with RS facing and circular needle pick up and k84 sts evenly around neck edge.

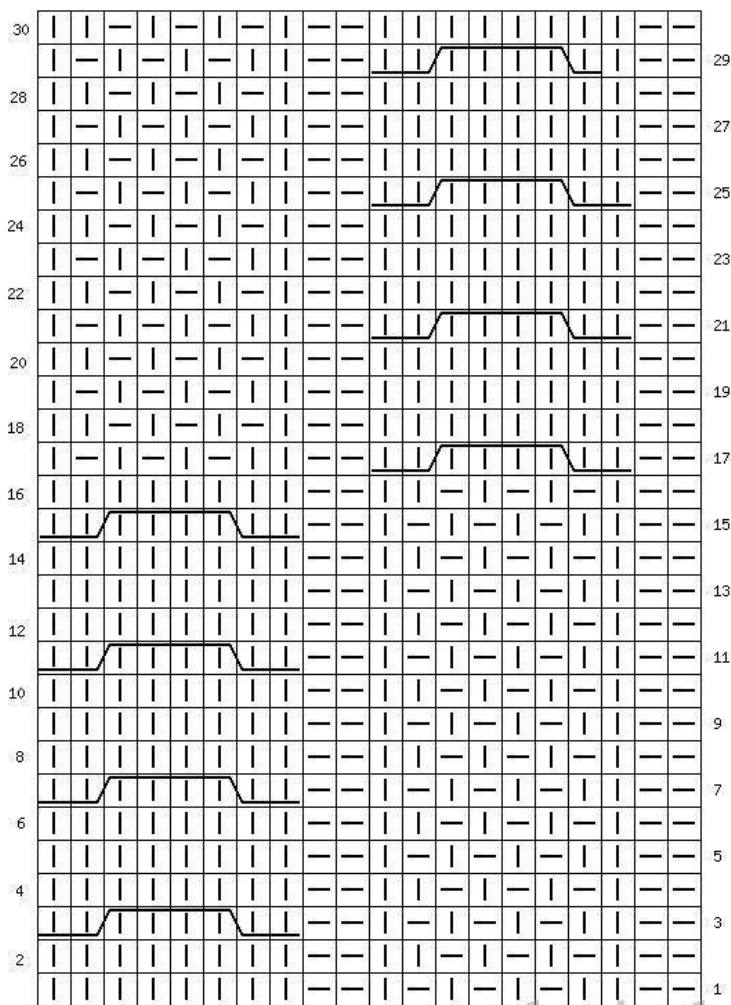
Then work 8 cm = 24 rnds in rib pattern.

Bind off all sts in pat.


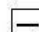


Fold band in half to inside and sew in place.

Join side and sleeve seams.

Chart



patt rep = 20 sts

-  = K1
-  = P1
-  = C4F: sl2 kwise onto cable needle and leave at front of work, K2 from left-hand needle, K2 from cable needle
-  = C4B: sl2 kwise onto cable needle and leave at back of work, K2 from left-hand needle, K2 from cable needle

