

Aran Knit Stitch Pattern



Cast on 40 stitches + 2 selv sts and work according to chart.

RS rows and WS rows are shown.

Read RS rows from right to left, WS rows from left to right.

Work the sts as they are shown with RS of work facing.

The rep pat = 20 sts.

Beg with 1 selv st and sts before patt rep, work patt rep throughout, end with sts after patt and 1 selv st.

Rep rows 1- 40 throughout.

Row 1 (rs): p5, k3, p5, k7, p5, k3, p5, k7

Row 2 (ws): p7, k5, p3, k2, p1, k2, p7, k5, p3, k5

Row 3 (rs): p5, yo, cdd, yo, p5, t7f, p5, yo, cdd, yo, p5, t7f

Row 4 (ws): p7, k1, p3, k1, p3, k2, p1, k2, p7, k13

Row 5 (rs): p5, k3, p5, k7, p5, k3, p5, k7

Row 6 (ws): p7, k5, p3, k5, p7, k5, p4, k4

Row 7 (rs): p5, yo, cdd, yo, p3, tbp2k1tbl, k5, tfp2, p3, yo, cdd, yo, p3, tbp2k1tbl, k5, p1

Row 8 (ws): k1, p7, p1 tbl, k9, p1 tbl, k2, p7, p1 tbl, p7, k4

Row 9 (rs): p5, k4, tbp2k1tbl, p2, k5, p2, tfp2, p5, tbp2k1tbl, k7, p1

Row 10 (ws): k1, p34, k5

Row 11 (rs): p5, k33, p2

Row 12 (ws): k2, p33, k5

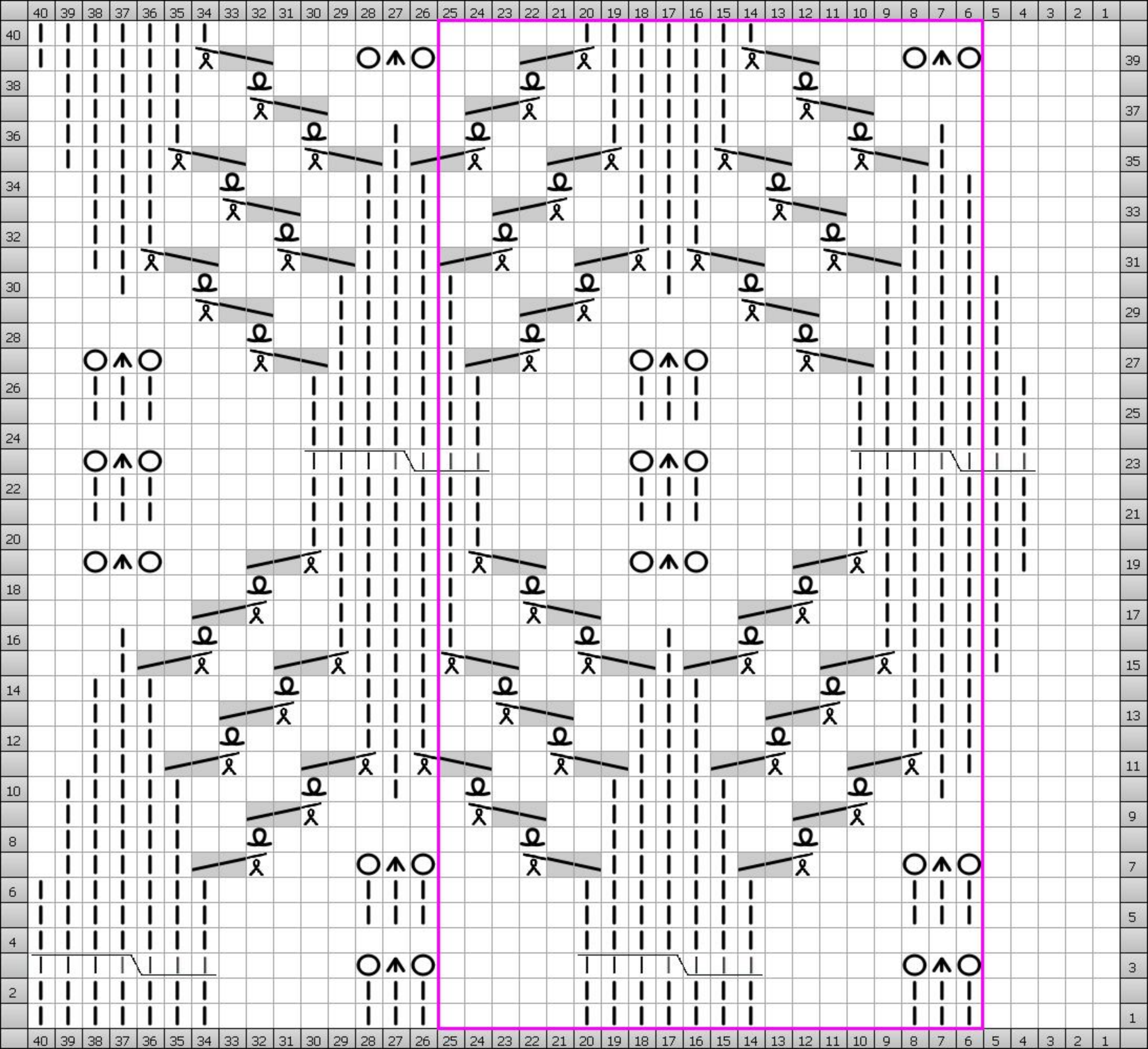
Row 13 (rs): p5, k33, p2

Row 14 (ws): k2, p33, k5

Row 15 (rs): p3, k34, p3

Row 16 (ws): k3, p34, k3
Row 17 (rs): p3, k32, p5
Row 18 (ws): k5, p32, k3
Row 19 (rs): p3, k32, yo, cdd, yo, p2
Row 20 (ws): k5, p32, k3
Row 21 (rs): p3, k35, p2
Row 22 (ws): k2, p35, k3
Row 23 (rs): p3, k32, yo, cdd, yo, p2
Row 24 (ws): k5, p32, k3
Row 25 (rs): p3, k35, p2
Row 26 (ws): p1, k1, p35, k3
Row 27 (rs): p3, k26, tfp2, p3, yo, cdd, yo, p2
Row 28 (ws): k8, p1 tbl, p28, k3
Row 29 (rs): p3, k31, p6
Row 30 (ws): p1, k2, p1, k2, p1 tbl, p30, k3
Row 31 (rs): p3, k35, p2
Row 32 (ws): k2, p35, k3
Row 33 (rs): p3, k35, p2
Row 34 (ws): k2, p35, k3
Row 35 (rs): p3, k35, p2
Row 36 (ws): k1, p36, k3
Row 37 (rs): p3, k36, p1
Row 38 (ws): k1, p36, k3
Row 39 (rs): p3, k37
Row 40 (ws): p37, k3

Chart



Key



Central Double Decrease
cdd

(R5) slip 2 sts, knit 1, pass 2 slip sts over
(W5) slip 2 sts together, purl next st, pass 2 slip stitches over



Knit
k

(R5) Knit
(W5) Purl



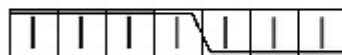
K1 tbl
k1 tbl

(R5) K1 tbl
(W5) P1 tbl



Purl
p

(R5) Purl
(W5) Knit



Twist 7 Front
t7F

(R5) Sl 4 sts to cn and hold at front, K3, K4 from cn
(W5) Sl 4 sts to cn and hold at front, K3, K4 from cn



Twist 3 Back Purl 2 Knit tbl
tbp2k1tbl

(R5) Sl 2 st to cn and hold at back, K1tbl, P2 from cn
(W5) Sl 2 st to cn and hold at back, K1tbl, P2 from cn



Twist 3 Front Purl 2
tfp2

(R5) Sl 1 st to cn and hold at front, P2, K1tbl from cn
(W5) Knit



Yarn Over
yo

(R5) Yarn Over
(W5) Yarn Over