

Leaf Lace Stitch Pattern



Cast on 25 stitches + 2 selv sts and work according to chart.

Only RS rows are shown.

On WS rows, work all sts and yos P.

The rep pat = 12 sts.

Begin with 1 selv st and st before patt, rep patt, end with sts after patt and 1 selv st.

Repeat rows 1- 32 throughout.

Row 1: k1, yo, k4, cdd, k4, yo, k1, yo, k4, cdd, k4, yo, k1

Row 3: k1, yo, k4, cdd, k4, yo, k1, yo, k4, cdd, k4, yo, k1

Row 5: k1, yo, k4, cdd, k4, yo, k1, yo, k4, cdd, k4, yo, k1

Row 7: k1, yo, k4, cdd, k4, yo, k1, yo, k4, cdd, k4, yo, k1

Row 9: k2, yo, k3, cdd, k3, yo, k3, yo, k3, cdd, k3, yo, k2

Row 11: k3, yo, k2, cdd, k2, yo, k5, yo, k2, cdd, k2, yo, k3

Row 13: k4, yo, k1, cdd, k1, yo, k7, yo, k1, cdd, k1, yo, k4

Row 15: k5, yo, cdd, yo, k9, yo, cdd, yo, k5

Row 17: skp, k4, yo, k1, yo, k4, cdd, k4, yo, k1, yo, k4, k2tog

Row 19: skp, k4, yo, k1, yo, k4, cdd, k4, yo, k1, yo, k4, k2tog

Row 21: skp, k4, yo, k1, yo, k4, cdd, k4, yo, k1, yo, k4, k2tog

Row 23: skp, k4, yo, k1, yo, k4, cdd, k4, yo, k1, yo, k4, k2tog

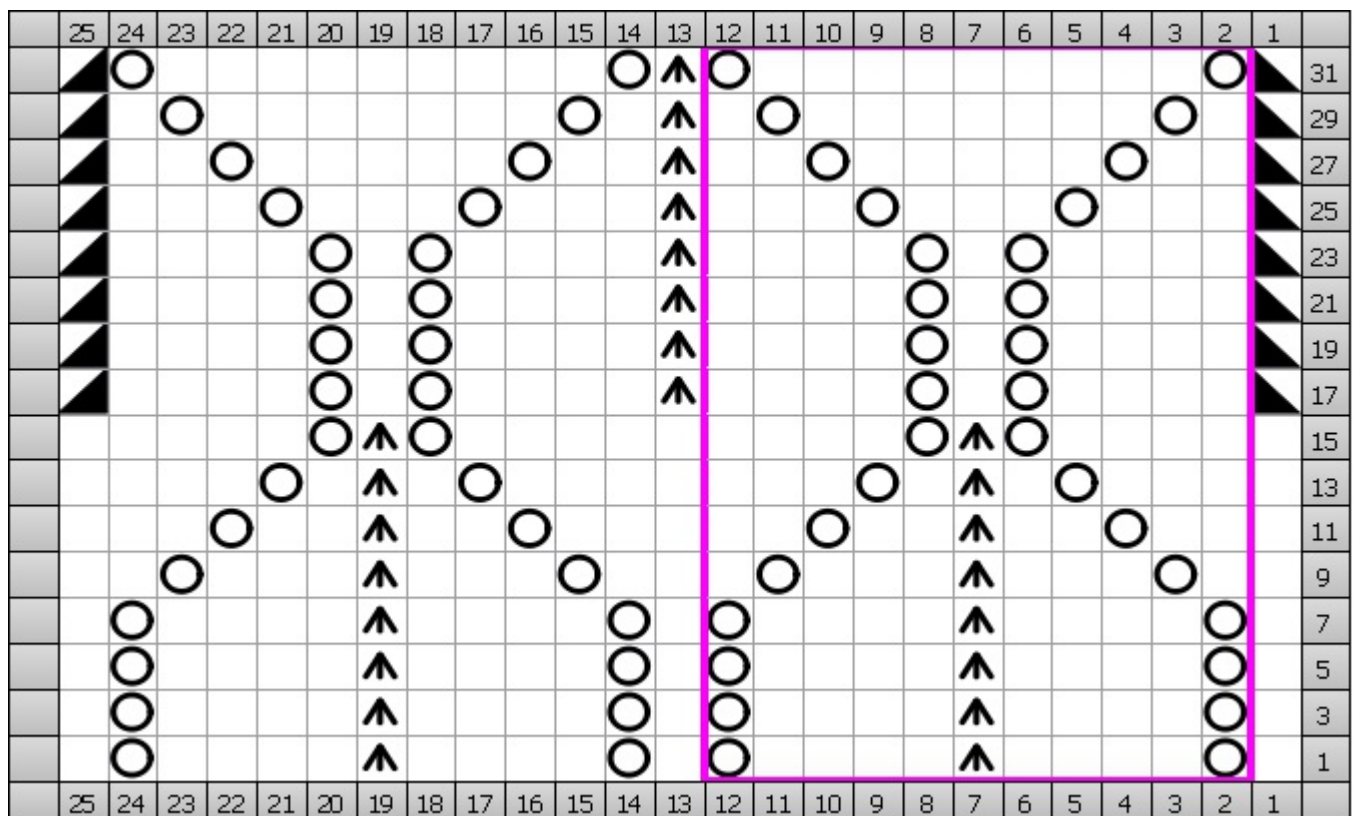
Row 25: skp, k3, yo, k3, yo, k3, cdd, k3, yo, k3, yo, k3, k2tog






Row 27: skp, k2, yo, k5, yo, k2, cdd, k2, yo, k5, yo, k2, k2tog

Row 29: skp, k1, yo, k7, yo, k1, cdd, k1, yo, k7, yo, k1, k2tog

Row 31: skp, yo, k9, yo, cdd, yo, k9, yo, k2tog

Chart



Key	
	Central Double Decrease cdd (RS) slip 2 sts, knit 1, pass 2 slip sts over
	Knit k (RS) Knit
	Knit 2 Together k2tog (RS) Knit 2 stitches together
	SKP skp (RS) Slip 1, knit 1, pass slipped stitch over
	Yarn Over yo (RS) Yarn Over