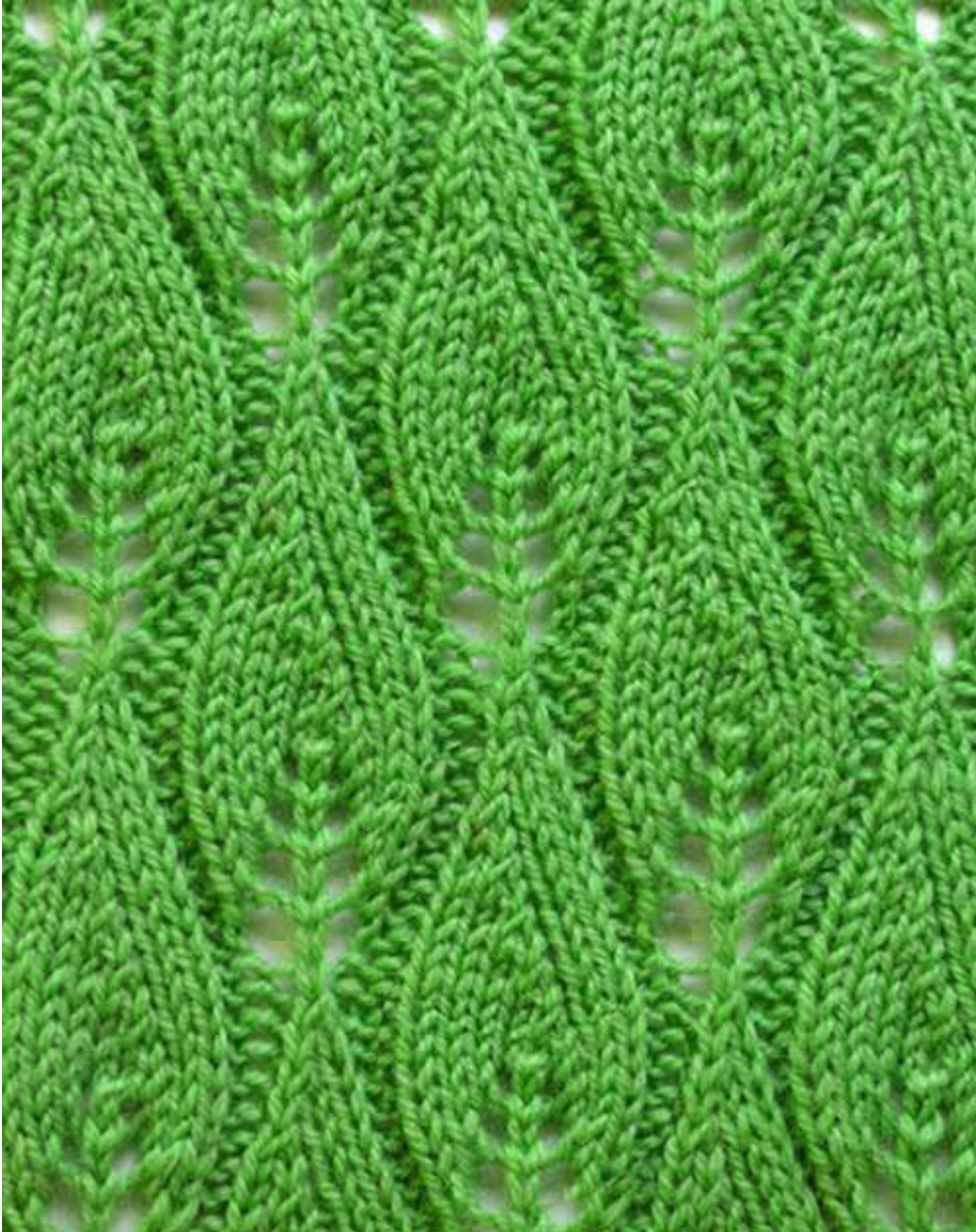


## Leaf Knit Stitch Pattern



Cast on 17 stitches + 2 selv sts and work according to chart.

RS rows and WS rows are shown.

Read RS rows from right to left, WS rows from left to right.

RS rows and WS rows are shown with RS of work facing.

The pat rep = 12 sts.

Begin with 1 selv st, work patt rep throughout, end with sts after patt rep and 1 selv st.

Repeat rows 1- 24 throughout.

Row 1 (rs): p2, yo, k1, yo, p2, k2, k2tog, k3, p2, yo, k1, yo, p2

Row 2 (ws): k2, p3, k2, p6, k2, p3, k2

Row 3 (rs): p2, k1, yo, k1, yo, k1, p2, k2, k2tog, k2, p2, k1, yo, k1, yo, k1, p2

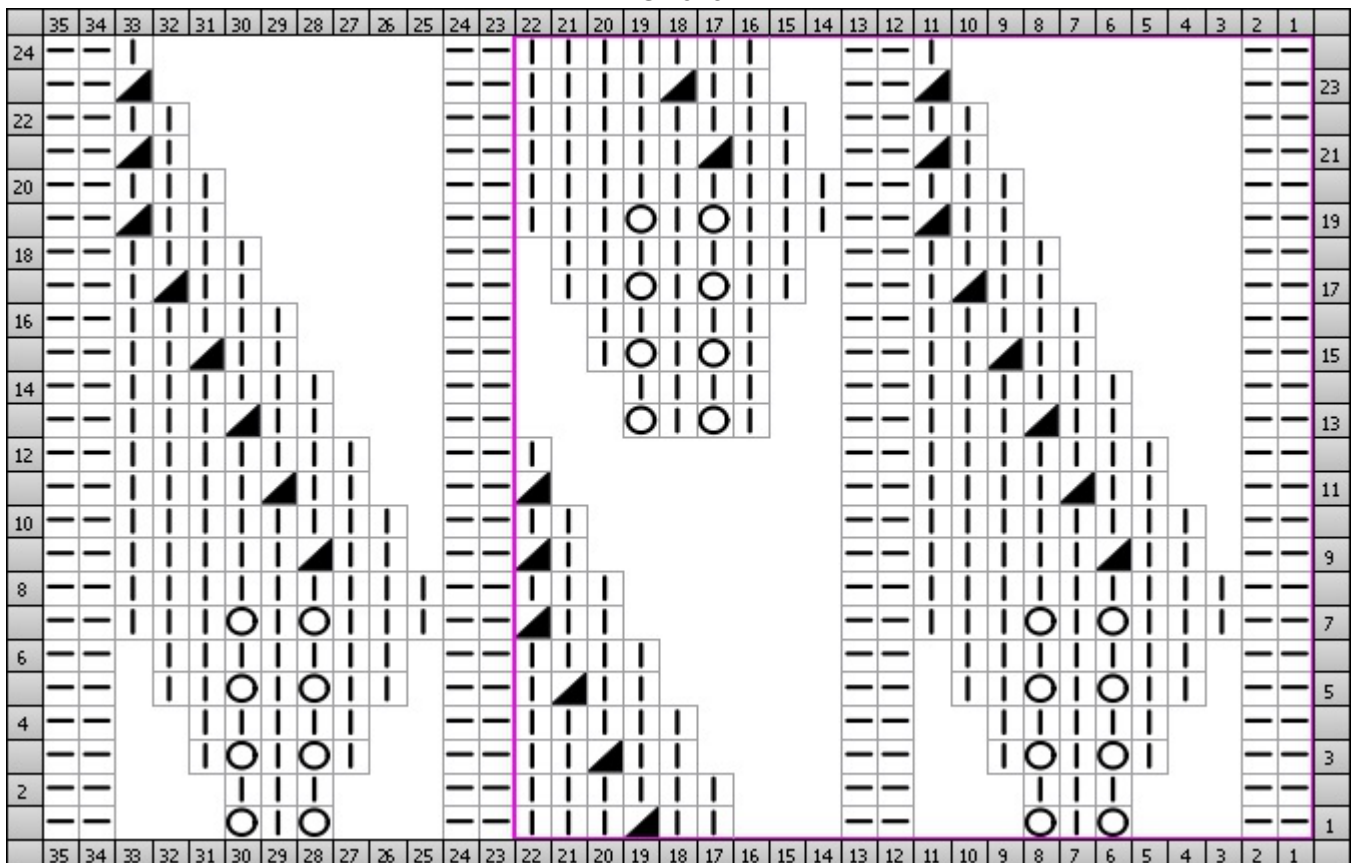
Row 4 (ws): k2, p5, k2, p5, k2, p5, k2



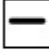


Row 5 (rs): p2, k2, yo, k1, yo, k2, p2, k2, k2tog, k1, p2, k2, yo, k1, yo, k2, p2

Row 6 (ws): k2, p7, k2, p4, k2, p7, k2

Row 7 (rs): p2, k3, yo, k1, yo, k3, p2, k2, k2tog, p2, k3, yo, k1, yo, k3, p2  
 Row 8 (ws): k2, p9, k2, p3, k2, p9, k2  
 Row 9 (rs): p2, k2, k2tog, k5, p2, k1, k2tog, p2, k2, k2tog, k5, p2  
 Row 10 (ws): k2, p8, k2, p2, k2, p8, k2  
 Row 11 (rs): p2, k2, k2tog, k4, p2, k2tog, p2, k2, k2tog, k4, p2  
 Row 12 (ws): k2, p7, k2, p1, k2, p7, k2  
 Row 13 (rs): p2, k2, k2tog, k3, p2, k1, yo, k1, yo, p2, k2, k2tog, k3, p2  
 Row 14 (ws): k2, p6, k2, p4, k2, p6, k2  
 Row 15 (rs): p2, k2, k2tog, k2, p2, k1, yo, k1, yo, k1, p2, k2, k2tog, k2, p2  
 Row 16 (ws): k2, p5, k2, p5, k2, p5, k2  
 Row 17 (rs): p2, k2, k2tog, k1, p2, k2, yo, k1, yo, k2, p2, k2, k2tog, k1, p2  
 Row 18 (ws): k2, p4, k2, p7, k2, p4, k2  
 Row 19 (rs): p2, k2, k2tog, p2, k3, yo, k1, yo, k3, p2, k2, k2tog, p2  
 Row 20 (ws): k2, p3, k2, p9, k2, p3, k2  
 Row 21 (rs): p2, k1, k2tog, p2, k2, k2tog, k5, p2, k1, k2tog, p2  
 Row 22 (ws): k2, p2, k2, p8, k2, p2, k2  
 Row 23 (rs): p2, k2tog, p2, k2, k2tog, k4, p2, k2tog, p2  
 Row 24 (ws): k2, p1, k2, p7, k2, p1, k2

### Chart



Key	
	Knit k  (RS) Knit (WS) Purl
	Knit 2 Together k2tog  (RS) Knit 2 stitches together (WS) Purl 2 Together
	Purl p  (RS) Purl (WS) Knit
	No Stitch x  (RS) No Stitch (WS) No Stitch
	Yarn Over yo  (RS) Yarn Over (WS) Yarn Over