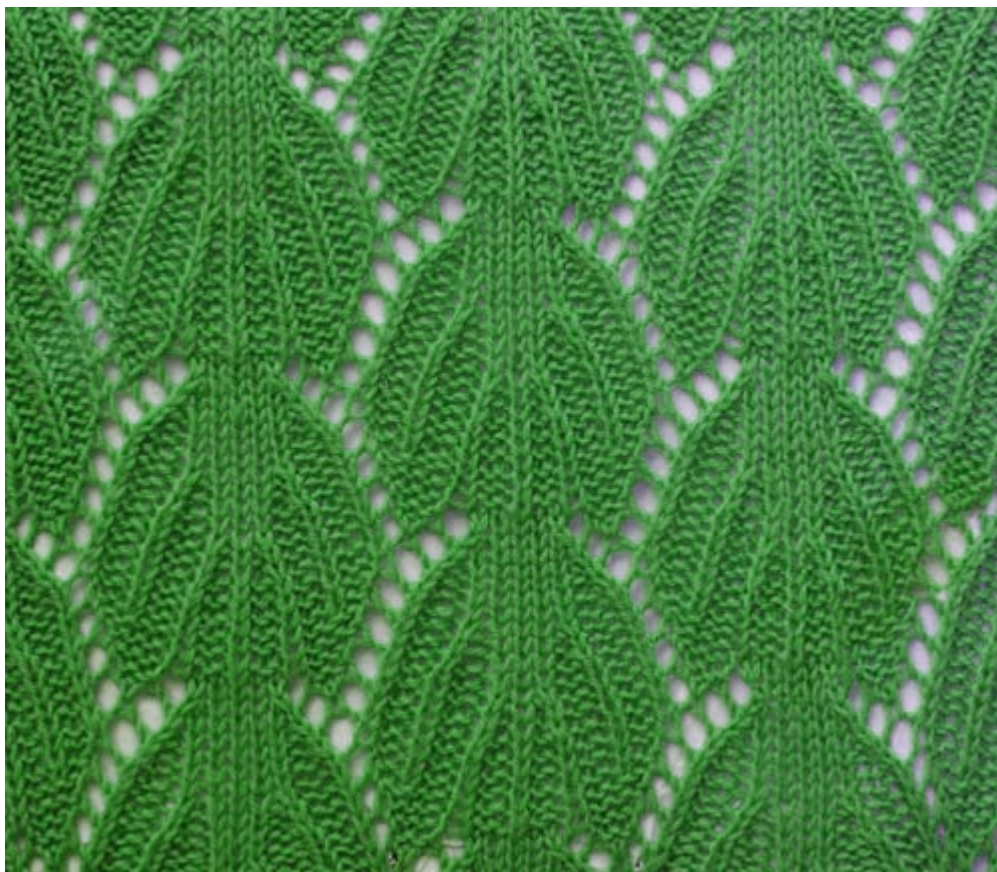


Leaves Knit Stitch Pattern



Cast on 31 stitches + 2 selv sts and work according to chart.

The chart shows only RS rows.

On WS rows, work all sts as they appear; work yos P.

The rep pat = 30 sts.

Begin with 1 selv st, work patt rep throughout, end with st after patt rep and 1 selv st.

Repeat rows 1- 20 throughout.

Row 1: k3, p1, k2tog, yo, k1, p2, k1, p2, k1, p2, k1, p2, k1, p2, k1, yo, skp, p1, k3

Row 2: k3, k2tog, yo, p1, yo, k1, p2, k1, p2, skp, p1, k1, p1, k2tog, p2, k1, p2, k1, yo, p1, yo, skp, k3

Row 3: k2, k2tog, yo, p3, yo, k1, p2, k1, p2, skp, k1, k2tog, p2, k1, p2, k1, yo, p3, yo, skp, k2

Row 4: k1, p2, k1, p4, yo, k1, p2, skp, p1, k3, p1, k2tog, p2, k1, yo, p4, k1, p2, k1

Row 5: k1, p2, k1, p2, k1, p2, yo, k1, p2, skp, k3, k2tog, p2, k1, yo, p2, k1, p2, k1, p2, k1

Row 6: k1, p2, k1, p2, k1, p2, k1, yo, skp, k7, k2tog, yo, k1, p2, k1, p2, k1, p2, k1

Row 7: k2, k2tog, p2, k1, p2, k1, yo, p1, yo, skp, k5, k2tog, yo, p1, yo, k1, p2, k1, p2, skp, p1, k1

Row 8: k1, k2tog, p2, k1, p2, k1, yo, p3, yo, skp, k3, k2tog, yo, p3, yo, k1, p2, k1, p2, skp, k1

Row 9: k2, p1, k2tog, p2, k1, yo, p4, k1, p2, k1, p2, k1, p4, yo, k1, p2, skp, p1, k2

Row 10: k2, k2tog, p2, k1, yo, p2, k1, p2, k1, p2, k1, p2, k1, p2, yo, k1, p2, skp, k2

Row 11: k3, p1, k2tog, yo, k1, p2, k1, p2, k1, p2, k1, p2, k1, p2, k1, yo, skp, p1, k3

Row 12: k3, k2tog, yo, p1, yo, k1, p2, k1, p2, skp, p1, k1, p1, k2tog, p2, k1, p2, k1, yo, p1, yo, skp, k3

Row 13: k2, k2tog, yo, p3, yo, k1, p2, k1, p2, skp, k1, k2tog, p2, k1, p2, k1, yo, p3, yo, skp, k2

Row 14: k1, p2, k1, p4, yo, k1, p2, skp, p1, k3, p1, k2tog, p2, k1, yo, p4, k1, p2, k1

Row 15: k1, p2, k1, p2, k1, p2, yo, k1, p2, skp, k3, k2tog, p2, k1, yo, p2, k1, p2, k1, p2, k1

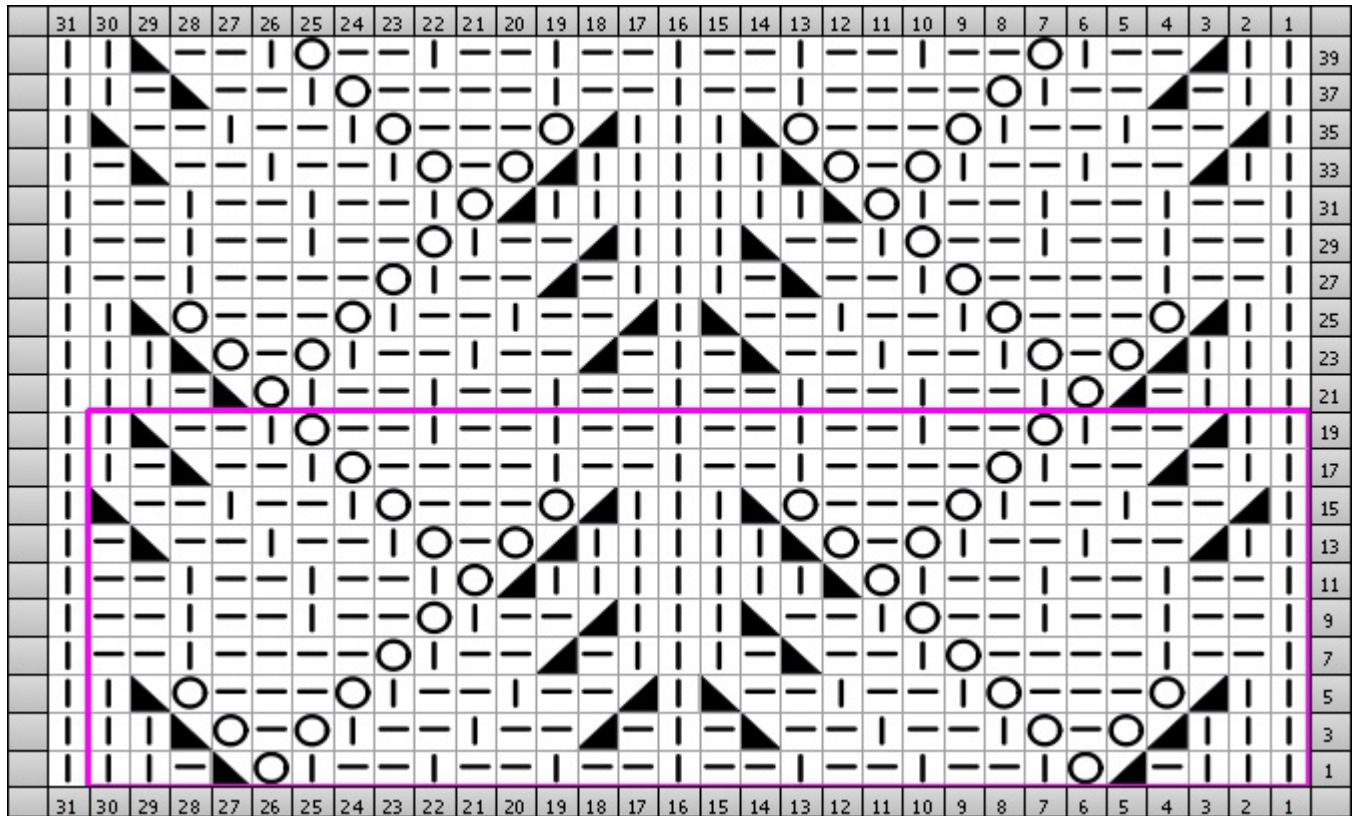
Row 16: k1, p2, k1, p2, k1, p2, k1, yo, skp, k7, k2tog, yo, k1, p2, k1, p2, k1, p2, k1

Row 17: k2, k2tog, p2, k1, p2, k1, yo, p1, yo, skp, k5, k2tog, yo, p1, yo, k1, p2, k1, p2, skp, p1, k1

Row 18: k1, k2tog, p2, k1, p2, k1, yo, p3, yo, skp, k3, k2tog, yo, p3, yo, k1, p2, k1, p2, skp, k1

Row 19: k2, p1, k2tog, p2, k1, yo, p4, k1, p2, k1, p2, k1, p4, yo, k1, p2, skp, p1, k2
Row 20: k2, k2tog, p2, k1, yo, p2, k1, p2, k1, p2, k1, p2, k1, p2, k1, p2, yo, k1, p2, skp, k2

Chart



Key	
	Knit k (R5) Knit
	Knit 2 Together k2tog (R5) Knit 2 stitches together
	Purl p (R5) Purl
	SKP skp (R5) Slip 1, knit 1, pass slipped stitch over
	Yarn Over yo (R5) Yarn Over